

Optical Time Domain Reflectometer

F
T
E
7
0
0
0
A
-
E
X
T



Features:

- 39 dB Dynamic Range
- 10 Hour Battery Life w/2 Hour Quick recharge
- Auto-Grade Fault Finder
- Express Help System
- Bluetooth Operation with Android Devices
- Video Scope With Pass/Fail Grading Map
- Fib-R-Map Event Analyzer
- Macro Bend and Bidirectional Analysis
- Full Auto, Construction and Expert Modes
- Instant On, Immediate Scan
- Live Fiber Detection
- Onboard Memory of ~4000 traces
- CW / Fiber Identifier Light Source
- CertSoft Report Software with .sor Capability
- Real Time System ORL

The FTE7000A-EXT Optical Time Domain Reflectometer is designed for Metro or PON applications. With 39dB at 1310nm and 1550nm there is abundant range to meet your requirements. Add the 38dB 1625nm active port to perform liver fiber test in your PON networks. The FTE7000A series is a simple to operate touch screen unit with a bright color display. As with our other FTE7000A units, it has an IEC61300-3-35 method "B" video inspection system for use with the optional VIS300 video probe.

The FTE7000A-EXT and FTE7000A-PON units have our rechargeable lithium Ion battery pack that supports up to 10 hours of operation with a quick 2 hour recharge cycle. This unit includes all the features expected in today's hand held OTDR and more; bright color touch screen, project management, file storage, Fib-R-Map schematic event analysis, pass/fail threshold settings and onboard context sensitive Express Help system to keep the learning curve short and simple.

This OTDR may also be operated with our Andriod app which is a real time application for your compatible Android tablet or phone.

The FTE7000A weighs less then 2.0 pounds and with a hardened water resistant enclosure in a sturdy rubber boot, this OTDR is great for all working conditions. You can print professional reports that include; Fib-R-Map schematic analysis and loss tests set measurements with the included "CertSoft" certification software suite.



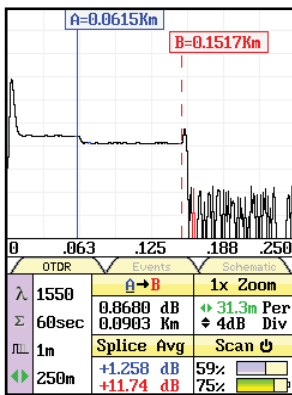
Made In the USA

Terahertz Technologies Inc.
169 Clear Rd., Oriskany NY 13424
Toll Free 888-U.S.-OTDRS (876-8377)
Phone: 315-736-3642 Fax: 315-736-4078
E-mail: sales@teratec.us
Web: www.teratec.us

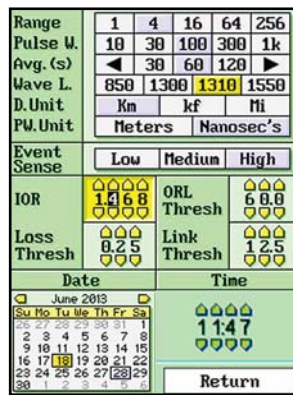
Specifications

Wavelength	1310, 1550 and 1625 nm +/-20nm
Dynamic Range	39/39/38 dB
Pulse Width	5 - 20,000 ns
Units of Measurement	km, ft, kf, mi
Event Dead zone	1m
Attenuation Dead Zone	4m
Resolution	.125 - 32m
Distance Uncertainty	±(0.75m + 0.005% x distance + sampling resolution)
Full Scale Distance Range	0.25-260km SM
Typical Real-time Refresh Rate	2 Hz
Group Index of Refraction (GIR)	1.024 - 2.048
Linearity	± .1 dB/dB
Memory Capacity	~4000
Memory Type	Internal
Power Supply / Charger	Universal
Battery	Li-ion 10 hr typ.
Storage Temperature	-20 to 60 C
Operating Temperature Range	0 to 40 C
Dimensions (w/out rubber boot)	7.75" L x 4.5" W x 2.25" H (197mm L x 114mm W x 57mm H)
Weight	1.7 lbs (0.8 kg)
Communications ports	USB and Bluetooth
Connector Styles	Interchangeable
Accessories Provided	Universal Power Adapter w/US, UK, Continental Europe, and Australian Plugs, Interchangeable adapters, OTDR FC,ST and SC, Power Meter 1.25mm and 2.5mm universals, FC, ST and SC. Android Application, Windows Compatible Software, Rubber Boot and Manual on CD

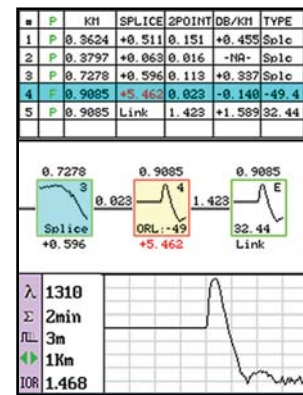
TTI reserves the right to change specifications without notice.



Large - Easy to Read Trace/Events, Icons and Measurements



Intuitive Expert Parameter Screen



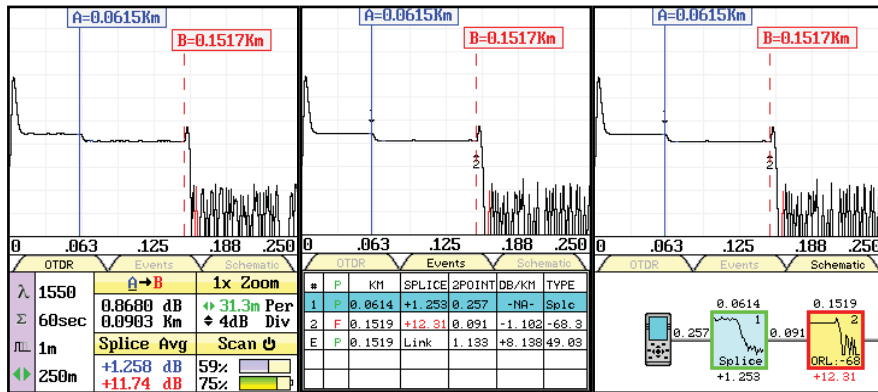
Fib-R-Map Schematic Event Analysis

(888)U.S.-OTDRS

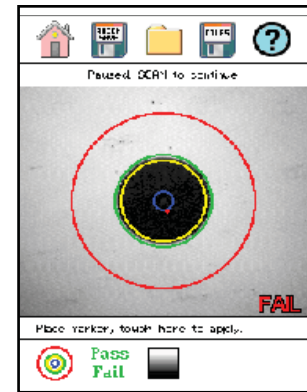


Made In the USA

Terahertz Technologies Inc.
169 Clear Rd., Oriskany NY 13424
Toll Free 888-U.S.-OTDRS (876-8377)
Phone: 315-736-3642 Fax: 315-736-4078
E-mail: sales@teratec.us
Web: www.teratec.us



Simple Tab Selection to Change Between Views of the Trace event overlay with Parameters and Measurements, Event Table or Schematic View.



IEC61300-3-35 Method "B" Pass Fail Video Inspection System Included

Power Meter Specifications

Detector Type	InGaAs
Connector Type	Interchangeable - 1.25mm and 2.5mm Univ, FC, ST and SC included
Dynamic Range	+5 to -77dB (CATV - +25 to -57dB)
Calibrated Wavelengths	850, 1300, 1310, 1490, 1550 and 1625nm
Power Measurement Uncertainty	± 0.18 dB under reference conditions, ± 0.25 dB from 0 to -65 dBm, ± 0.35 dB from 0 to +5 dBm and from -65 to -77 dBm
Units of Measurement	dBm, dB
Resolution	.01 dB

TTI reserves the right to change specifications without notice.

Light Source Specifications

Fiber Type	Single mode
Wavelengths	1310, 1550 and 1625nm +/- 20nm (as order with OTDR)
Output Power	0 dBm
Laser Safety Classification	Class I Safety Per FDA/CDRH and IEC-825-1 Regulation
Modulation Modes	CW, 270 Hz, 1000 Hz, 2000 Hz

TTI reserves the right to change specifications without notice.

Ordering Information

FTE-7000A-EXT	1310/1550 nm SM Dual Wavelength OTDR with Video Scope Capability and LTS (Probe Sold Separately)
FTE-7000A-PON	1310/1550nm with 1625 Active, PON OTDR with Video Scope Capability and CW Light Source (No Power Meter with PON OTDR) (Probe Sold Separately)
VIS300	Video Probe

(888)U.S.-OTDRS

Terahertz Technologies Inc.
 169 Clear Rd., Oriskany NY 13424
 Toll Free 888-U.S.-OTDRS (876-8377)
 Phone: 315-736-3642 Fax: 315-736-4078
 E-mail: sales@teratec.us
 Web: www.teratec.us



Made In the USA

TTI makes every effort to insure all statements and information for the products referred to in this document are accurate and reliable. TTI can not accept any responsibility for errors, omissions or miss statements, nor can they accept responsibility for any actions taken based on the information demonstrated herein. TTI reserves the right to make changes of any kind to the product referred to in this document without prior notice.
 © 4/2016 Terahertz Technologies Inc.