

FTE-7500A-QUAD Optical Time Domain Reflectometer



Features:

- Instant On
- 36 dB Dynamic Range
- Short 1 meter Dead Zone
- Quad SM/MM OTDR
- Fiber Inspection Video Probe Port
- Visible Fault Locator
- Onboard Memory of ~500 traces
- Auto-Wavelength Power Meter
- Stable Light Source
- Event Table with Pass/Fail Feature
- Light Weight Rugged Enclosure
- Telcordia SR4731 Compatible Software
- Full Auto, Construction and Expert Modes

The TTI FTE7500A-Quad OTDR is a complete tester with:

SM and MM wavelengths for your hybrid fiber networks • Power Meter • Stable CW Light Source • Visible Fault Locator • Auto Pass/Fail/Center Fiber Inspection System.

The FTE-7500A quad wavelength Optical Time Domain Reflectometer performs a wide variety of functions as well as being a fast, simple to use OTDR. Its instant on feature, ease of use, rugged housing and affordable price make this the best day to day unit on the market. This unit includes a integrated Video Scope, Visual Fault Locator, AutoTest /AutoWave Power Meter and CW Light Source.

The FTE-7500A-QUAD has a 36/34/26/27dB dynamic range and a 1 meter dead zone. These specifications, and a full set of operational modes, such as; one button fault finder, construction, real time and full manual mode, make it perfect for testing and troubleshooting requirements, in LAN, Access and premise networks.

The FTE-7500A OTDR also includes a Visual Fault Locator, AutoTest/AutoWave Power Meter, Stable/ CW Light Source and a Video Inspection Scope (probe sold separately).



Made In the USA

Terahertz Technologies Inc.
169 Clear Rd., Oriskany NY 13424
Toll Free 888-U.S.-OTDRS (876-8377)
Phone: 315-736-3642 Fax: 315-736-4078
E-mail: sales@teratec.us
Web: www.teratec.us

FTE7000A-CWDM *Optical Time Domain Reflectometer*

This unit includes all the features expected in today's hand held OTDR; bright 4" color display, immediate start up, USB flash, internal storage, event table with pass/fail threshold setting and onboard context sensitive help which keeps the learning curve as short as possible.

The FTE-7500A weighs less than 2.0 pounds and with a hardened water resistant enclosure, this OTDR is great for all working conditions. The rubber boot with bail adds protection and provides the ideal angle for viewing the display while operating on a work bench.

Features include:

Full Auto, Construction and Expert Modes, Free Reporting Software and Onboard and Flash Storage Capability

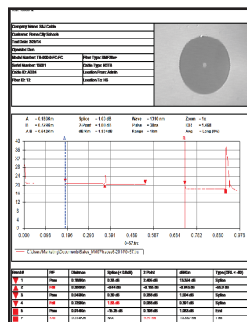
OTDR - 36/34, 1310/1550nm SM and 26/27, 850/1300 MM wavelengths with Pass/Fail Summary and Fib-R- Map Trace Analysis.

Broadband PM - Calibrated at the standard 850/1300/1310//1490/1550/1625nm wavelengths

CW Laser Source - For use with broadband power meter or for fiber identification

Video Scope - Fib-R-View Auto pass/fail analysis with Auto image centering

Cert-Soft Software - Print professional reports that can include; loss tests set measurements and connector end face images with the included "CertSoft" certification software suite.



Use TTI's CertSoft™
Software Suite to Generate
OTDR Test Reports that contain
Connector Image and Loss Test
Set Readings,



Made In the USA

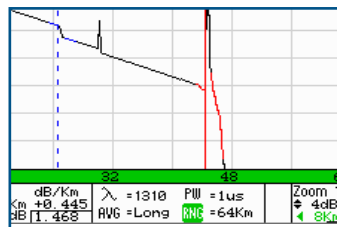
Terahertz Technologies Inc.
169 Clear Rd., Oriskany NY 13424
Toll Free 888-U.S.-OTDRS (876-8377)
Phone: 315-736-3642 Fax: 315-736-4078
E-mail: sales@teratec.us
Web: www.teratec.us

FTE7-7000A-CWDM *Optical Time Domain Reflectometer*

OTDR Specifications

| | |
|---------------------------------|------------------------------------------------------------------------------------------------------------------------------------------------------------------------------------|
| Standard Wavelengths | 850, 1300, 1310, 1550nm ±20nm |
| Dynamic Range | 26/27dB MM, 36/34dB SM |
| Pulse Width | 5 - 20,000 ns |
| Units of Measurement | km, kf, mi |
| Event Dead zone | 1m |
| Attenuation Dead Zone | 4m |
| Resolution | .125 - 32m |
| Distance Uncertainty | ±(0.75m + 0.005% x distance + sampling resolution) |
| Full Scale Distance Range | 1-64km MM , 1-240km SM |
| Typical Real-time Refresh Rate | 2 Hz |
| Group Index of Refraction (GIR) | 1.024 - 2.048 |
| Linearity | ± .05 dB/dB |
| Memory Capacity (Internal) | ~500 |
| Memory Type | Internal and Flash Drive |
| Power Supply / Charger | Universal 110/220 With Interchangeable Mains |
| Battery | 8hr |
| Storage Temperature | -20 to 60 C |
| Operating Temperature Range | -10 to 50 C |
| Dimensions (w/out rubber boot) | 7.75" L x 4.5" W x 2.25" H (197mm L x 114mm W x 57mm H) |
| Weight | 2 lbs |
| Communications ports | USB and USB Flash Drive Ports |
| Connector Styles | FC, ST, SC Interchangeable |
| Accessories Provided | Universal Power Adapter w/US, UK, Continental Europe, and Australian Plugs, Interchangeable FC/ST and SC Adapters, Windows/Telcordia SR4731 Software, Rubber Boot and Manual on CD |

TTI reserves the right to change specifications without notice.



Large Trace Display

| Filename | WL | Rng | PW | Date |
|--------------|------|------|-----|-------------|
| Rdmin_HPE-1 | 1310 | 64km | 1us | 09/21 09:13 |
| Rdmin_HPE-2 | 1550 | 64km | 1us | 09/21 09:13 |
| Rdmin_HPE-3 | 1310 | 64km | 1us | 09/21 09:14 |
| Rdmin_HPE-4 | 1550 | 64km | 1us | 09/21 09:14 |
| Rdmin_HPE-5 | 1310 | 64km | 1us | 09/21 09:15 |
| Rdmin_HPE-6 | 1550 | 64km | 1us | 09/21 09:16 |
| Rdmin_HPE-7 | 1310 | 64km | 1us | 09/21 09:16 |
| Rdmin_HPE-8 | 1550 | 64km | 1us | 09/21 09:17 |
| Rdmin_HPE-9 | 1310 | 64km | 1us | 09/21 09:17 |
| Rdmin_HPE-10 | 1550 | 64km | 1us | 09/21 09:18 |

Cable #4 SH 24 fiber LT

User Friendly File Management



Made In the USA

Terahertz Technologies Inc.
 169 Clear Rd., Oriskany NY 13424
 Toll Free 888-U.S.-OTDRS (876-8377)
 Phone: 315-736-3642 Fax: 315-736-4078
 E-mail: sales@teratec.us
 Web: www.teratec.us

FTE7000A-CWDM *Optical Time Domain Reflectometer*

Visible Light Source

| | |
|----------------|-----------------|
| Emitter Type | Laser |
| Wavelength | 650nm ±5nm |
| Connector Type | 2.5mm Universal |
| Output Power | 1mW Max. |

Laser Safety

Class IIFDA21 CFR1040.10 &1040.11
IEC 825-1: 1993



TTI reserves the right to change specifications without notice.

Power Meter Specifications

| | |
|-------------------------------|-----------------------------------------------------------------------------------------------------------------------------|
| Detector Type | InGaAs |
| Connector Type | 2.5mm Interchangeable |
| Dynamic Range | +5 to -77dB (CATV - +25 to -57dB) |
| Calibrated Wavelengths | 850,1300,1310,1490,1550,1625nm |
| Units of Measurement | dBm, dB |
| Resolution | .01 dB |
| Power Measurement Uncertainty | ± 0.18 dB under reference conditions, ± 0.25 dB from 0 to -65 dBm, ± 0.35 dB from 0 to +5 dBm and from -65 to -77 dBm |
| Auto Test Range | 0 to -40dB |

TTI reserves the right to change specifications without notice.

Light Source Specifications

| | |
|-----------------------------|------------------------------------------------------|
| Fiber Type | Single mode, Multimode |
| Wavelengths | 850, 1300, 1310, 1550, 1625 nm ±20nm |
| Output Power | 0 dBm (-3dBm @ 1625nm) |
| Laser Safety Classification | Class I Safety Per FDA/CDRH and IEC-825-1 Regulation |
| Modulation Modes | CW, 270 Hz, 1000 Hz, 2000 Hz |

TTI reserves the right to change specifications without notice.

Ordering Information

| | |
|----------------|------------------------------------------------------------------------------------------------|
| FTE-7500A-QUAD | 1471/1491/1511/1531nm CWDM OTDR with LTS and Video Scope Capability (Probe Sold Separately) |
| VIS300 | Video Probe for FTE Series Fiber Optic Test Equipment |



Made In the USA

TTI makes every effort to insure all statements and information for the products referred to in this document are accurate and reliable. TTI can not accept any responsibility for errors, omissions or miss statements, nor can they accept responsibility for any actions taken based on the information demonstrated herein. TTI reserves the right to make changes of any kind to the product referred to in this document without prior notice.

© 5/2018 Terahertz Technologies Inc.